



# intAct Traktion-Power Deepcycle AGM

Sealed AGM battery with grid plates | electrolyte fixed in fleece | filled and charged | absolutely maintenance-free

Art.No.

## DC06-200AGM

Volt	6V
Capacity	175 Ah (c5), 190 Ah (c20)
CCR -18°C (EN)	-
Electrolyte	
Electrolyte density	
Size (LxWxH)	306 x 169 x 226 mm
Weight	31,5 kg
Pos. of Terminal	1
Terminal	F-M8
Bodenleiste	-



### Usage



### Robust and enduring

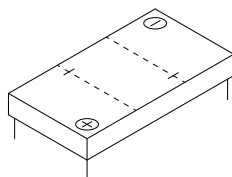
AGM-based for high currents and deep charge cycles. Our recommendation if you want an enduring, absolutely maintenance-free battery for electric vehicles or lifting platforms.

- » **Very high life expectancy.** 700 cycles according to IEC 254-1 for heavy cyclic use.
- » **Absolutely maintenance-free.** VRLA battery with gas recombination and safety valves, where refilling is not possible and not necessary.
- » **Constant power quality** throughout the discharge process even at high currents.
- » **Longer life** than wet lead-acid battery.
- » **Shorter charging time** than wet lead-acid battery.
- » **Low self-discharge.** Loses less than 3% charge per month.
- » **Vibration resistant AGM battery** with robust grids and strong fleece separators.
- » **Reinforced grid plates** with higher performance active material **for deep cycle applications.**
- » **Temperature and corrosion resistant case.**
- » **Can also be installed horizontally.**
- » **Leak-proof.**

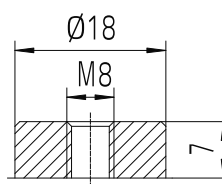
#### Size

Kasten: DC06-200AGM

#### Pos. of Terminal 1



#### Terminal F-M8



#### Bodenleiste -

As of 03.02.2026