



# intAct US-Power

Maintenance-free calcium battery (Ca/Ca) with expanded metal grids | wet charged

Art.No.

## 57010GUG

Volt	12V
Capacity	70 Ah (c20)
CCR -18°C (EN)	670 A (EN)
Electrolyte	diluted sulphuric acid
Electrolyte density	1,28 +/- 0,01 Kg/l (25° C)
Size (LxWxH)	260 x 179 x 186 mm
Weight	15,1 kg
Pos. of Terminal	1
Terminal	US
Base plate	B01

### Usage



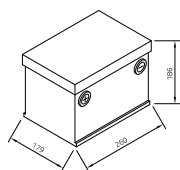
## For American vehicles

State-of-the-art high-performance batteries, where dimensions and end-pole types are matched to the requirements of U.S. vehicles. Our recommendation if installation dimensions and connections require a special battery.

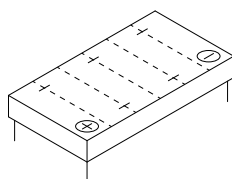
- » **Very high cold start performance.**
- » **Minimal self-discharge.**
- » **2 versions: U.S. front terminal** with inside thread (Types 56010 and 57010) and **A-cone terminal** according to DIN 60095 T2 (Type 58010).
- » **Approval for charging voltages up to 14.8 volts.**
- » Wet charged. Maintenance-free. **Ready to use.**



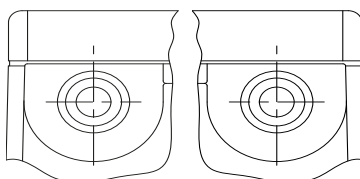
Size



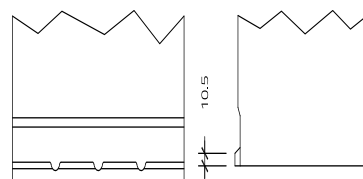
Pos. of Terminal 1



Terminal US



Base plate B01



As of 28.08.2025