

Optima Redtop

Sealed maintenance-free pure-lead spiral-cell battery | electrolyte absorbed (AGM)

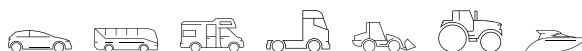
Art.No.

RT6V-2.1L

Volt	6V
Capacity	50 Ah (c20)
CCR -18°C (EN)	815 A (EN)
Electrolyte	diluted sulphuric acid
Electrolyte density	1,28 +/- 0,01 Kg/l (25° C)
Size (LxWxH)	254 x 90 x 203 mm
Weight	8,9 kg
Pos. of Terminal	1
Terminal	1 und US
Base plate	B06



Usage

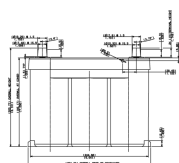


Highest starting performance

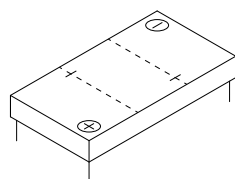
Whenever starting power is a top priority, e.g. in heavy commercial agricultural and construction machinery. Does not lose its starting ability even during long periods of downtime. Perfect for emergency vehicles or generators. Our recommendation for American vehicles if you want a sealed battery.

- » **Very high starting performance.** Wound pure-lead plates for larger plate surface and less plate spacing.
- » **Very cycle resistant.** Tolerates deep discharging by power-hungry consumers when the engine is switched off.
- » **Good vibration resistance and durability.** Pressed, wound plates protect the active material.
- » **For extreme conditions.**
- » **Sealed pure-lead spiral-cell battery** with electrolyte fixed in glass fibre mats (AGM).

Size

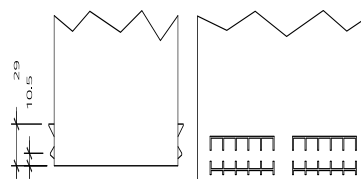


Pos. of Terminal 1



Terminal 1 und US

Base plate B06



As of 01.09.2025