

Optima Yellowtop

Sealed maintenance-free pure-lead spiral-cell battery | electrolyte absorbed (AGM)

Art.No.

YTU-4.2L

Volt	12V
Capacity	55 Ah (c20)
CCR -18°C (EN)	765 A (EN)
Electrolyte	diluted sulphuric acid
Electrolyte density	1,28 +/- 0,01 Kg/l (25° C)
Size (LxWxH)	254 x 175 x 200 mm
Weight	20,6 kg
Pos. of Terminal	1
Terminal	1 und US
Base plate	B13

Usage

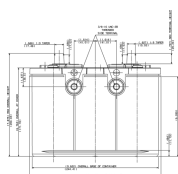


Long-term stable performance

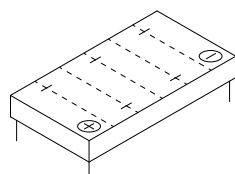
Particularly long-life battery that supplies consuming loads and small vehicles with a stable voltage characteristic during the entire discharge process. Our recommendation for anyone looking for a spill-proof, high-performance battery that can handle propulsion, powering and also starting.

- » **Pressed, wound plates** for reduced loss of active material and slower aging. Vibration-resistant.
- » **For medium cycle requirements.** Approx. 300 cycles at a discharge depth of up to 80%.
- » **Consistent performance quality throughout the discharge process.**
- » **Short charging times.**
- » **Larger plate surface area and reduced plate spacing** than grid plate batteries of the same case size **for higher performance.**
- » **6-volt and 12-volt versions.**

Size

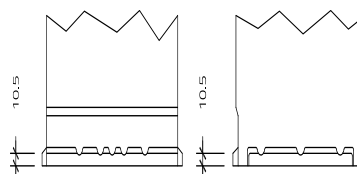


Pos. of Terminal 1



Terminal 1 und US

Base plate B13



As of 01.09.2025